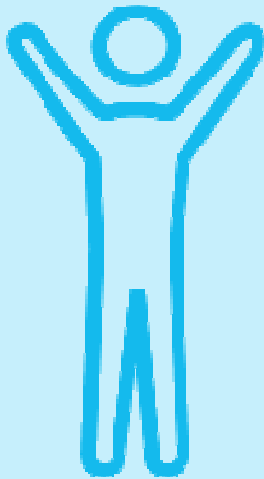


# COURSES AND WORKSHOPS FRENCH LANGUAGE FOR INTERNATIONAL STUDENTS

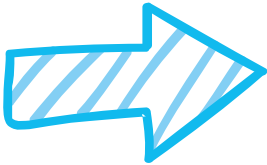


*FOR:*

*Exchange Students,  
Double Degrees,  
Non-exchange Students,  
PhD students  
enrolled at*

**«UNIVERSIT  D'ANGERS»**

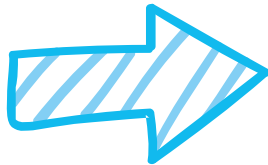
*I want to communicate both orally and in writing.  
I want to learn grammar rules and lexicon.*



*I choose  
French language courses.  
in St-Serge or Belle Beille.*

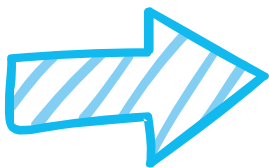


*I want to speak French with other foreign  
students.*



*I choose  
conversation workshops.*

*I have a good level in French but I need to know the  
university techniques and methodology to study in  
France.*



*I choose the  
University Work Methodology Course (MTU).*

*I am a medical student and I need to prepare for my internship at the  
CHU.*



*I choose the  
French for Medical Purposes (FOM).*

# PRESENTATION OF COURSES

Course types	French language course	Conversation Workshops	University Work Methodology Course (MTU)	French for Medical Purposes (FOM)
Hourly volume	30 hours	30 hours	30 hours	To do with the referent teacher.
Public	For all	For all	For all	only for students in training at the hospital CHU
CEFR levels	<b>From A1 to B2</b> ( beginner to advanced )	<b>From <u>A2</u> to B2</b> ( intermediate to advanced )	<b>B2-C1</b> (advanced)	<b>B1-B2</b>
Places and dates	<u>Belle Beille campus</u> (Lettres, langues et sciences humaines, Sciences, IUT, Polytech) <b>Thursday from 14:00 to 16:50</b>  <u>St Serge campus</u> (Droit Economie Gestion, ESTHUA, Médecine, Pharmacie) <b>Monday and Wednesday from 18:30 to 19:50</b>	<u>Belle Beille campus</u>  <b>Tuesday and Thursday from 18:30 to 19:50</b>	<u>Belle Beille campus</u>  <b>Presentation meeting:</b>  Date, time and room communicated later	<u>Health Campus</u>  <b>Presentation meeting:</b> September 2, 2022 at 2:00 p.m. room MAN-IMAL H201 (Fac de Santé)  Then September 12/13/15 2:00 p.m. to 4:50 p.m.
Validation	<u>exchange students: 6 ECTS</u> <u>double degrees: 4 ECTS</u> (according to university course)  <u>PhD students and non-exchange students: Certificate of course follow-up (to be withdrawn from CeLFE)</u>	<u>exchange students: 6 ECTS</u>  <u>double degrees, PhD students and non-exchange students: Certificate of course follow-up (to be withdrawn from CeLFE)</u>	<u>exchange students: 6 ECTS</u>  <u>PhD students and non-exchange students: Certificate of course follow-up (to be withdrawn from CeLFE)</u>	<u>exchange students:</u> To do with the referent teacher.

## START AND END OF COURSES

### Vacation

*St-Serge: from Monday September 26 to Wednesday December 14, 2022*

*Belle-Beille: from Thursday September 29 to Thursday December 15, 2022*

*Week 44 : from Saturday 29 October to Sunday 6 November 2022*

# Registration terms

<i>Steps</i>	<i>Action</i>	<i>Details</i>	<i>Dates</i>	<i>Who ?</i>
<b>1</b>	Back-to-school webinar (required)	You must attend the information webinar.	08/30/2022 At noon Link to the website	Students
<b>2</b>	Online registration	You must register online and choose 1 or 2 MAXIMUM courses offered via the registration form of the University of Angers.	Before September 14, 2022	Students
<b>3</b>	French positioning test	After registration, you must take a French test (SELF test) to find out your level in French (access code sent after confirming your online registration).	Before September 14, 2022	Students
<b>4</b>	Confirmation by email	Groups of levels are organized according to the results of the test and the campus.	September 23, 2022 (in the afternoon)	Administration
<b>5</b>	Beginning of classes	Classes begin Week 42 : - September 26, 2022 (St Serge campus) - September 29, 2022 (Belle-Beille campus)		Professors and students



## Contacts

Jérémy BRESSON, training assistant CeLFE  
celfe@univ-angers.fr

Denis LEMOÏNE, referent and teacher of training  
denis.lemoine@univ-angers.fr